

# B8000 EVOLUTION 4 WALLFORM



The B8000 wallform range is acknowledged by users for its ability to attain the highest level of productivity under optimum safety conditions. This shutter has been designed as a real «tool» quick and easy to erect. The equipment meets all the stability and security situations. Today Outinord wallforms are found in major stock yards in construction and public work companies.

#### INTEGRATED SAFETY

- Foldaway guardrails
- Lateral gates
- Access ladder and hatch

#### PRODUCTIVITY ON SITE

- Ready-to-use
- Quick erection and dismantling
- Easy vertical and horizontal couplings

#### ERGONOMICS AND ACCURACY

- Ergonomic jacks and access
- Dimensional accuracy
- Easy maintenance of the shutter

#### QUALITY OF THE CONCRETE

- Perfect jointing surface
- High dimensional accuracy of the frame
- High quality concrete finishes

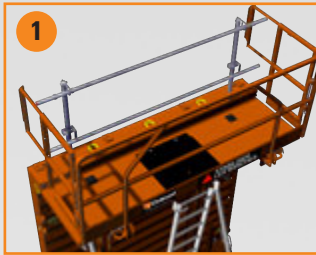
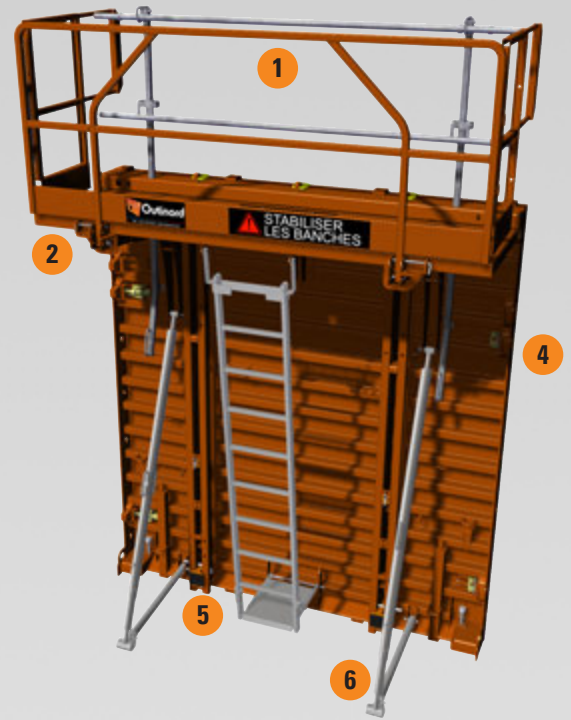


## SPECIFICATIONS

Width (m)	Height (m)			
	2,8	1,5	1	0,5
2,5	X	X	X	X
1,25	X	X	X	X
0,625	X	X	X	X

Table of the standard shutter dimensions

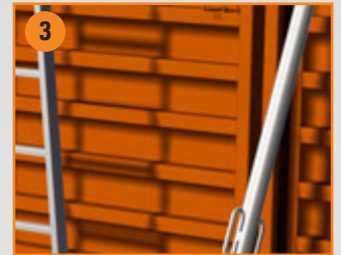
- Average weight of the shutter: 130Kg/m<sup>2</sup> (2.8m x 2.5m)
- Designed for 8T/m<sup>2</sup> concrete pour pressure
- Standard color: buff  
Other colors: optional  
Electrogalvanized guardrails: optional



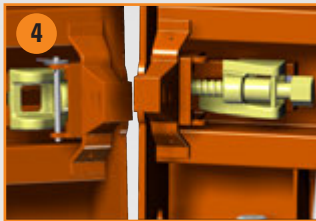
Safety guardrails around the concreting platform.



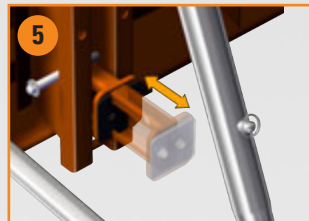
Concreting platform with access hatch.



High quality powder coating paint U.V. & shock resistant.



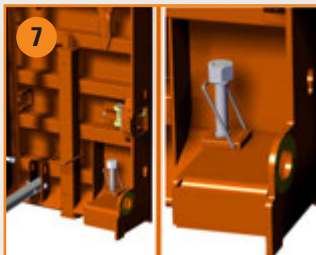
Horizontal coupling through a captive male and female mechanical aligning and levelling bolt.



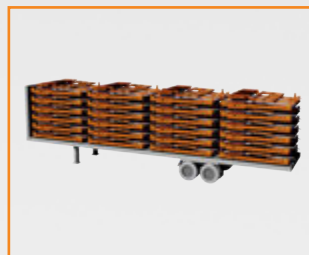
Foldaway storage wedge with non-slip runner.



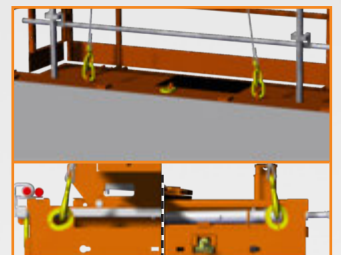
Electrogalvanized accessories: access ladder, push-pull props and footboard.



Ergonomic jack (left), Vertical coupling through a captive bolting system (right).



Transportable by standard freight, 6 stacked shutters, 24 shutters per truck trailer (2.8m x 2.5m).



Vertical lifting: 2 points.  
Horizontal lifting: 4 points.

The B8000 wallforms are designed in accordance with the requirements of the NFP93-350 standard, June 1995. The shutters meet the R399 CNAMTS recommendation adopted by the National Technical Committee of Building Industry and Public Works, June 2003.