

# PREFABRICATION



PRECAST BATTERY MOLDS

Outinord can provide a variety of special molds for use on-site to produce stairs, landing slabs, columns, retaining walls, parapets, balconies and closure walls. These molds, manufactured to exacting Outinord standards, are often provided ready-to-use with all connecting and handling accessories, built-in heaters, thermal insulation, vibrators and lifting beam included.

## PRECAST BATTERY MOLDS

Two pocket (1+1), single multiple pockets (4 to 6) or twin multiple pockets (4+4 or more).

Heights: 3.00m, 3.50m, and 4.00m.

Lengths: 8.00m, 10.00m, and 12.00m.

Thickness: 0.07 to 0.30m

**Optional:** Hydraulic tightening, powered movement, pump injected concrete system.

**Complementary features:** Plant installed edge forms and box outs.

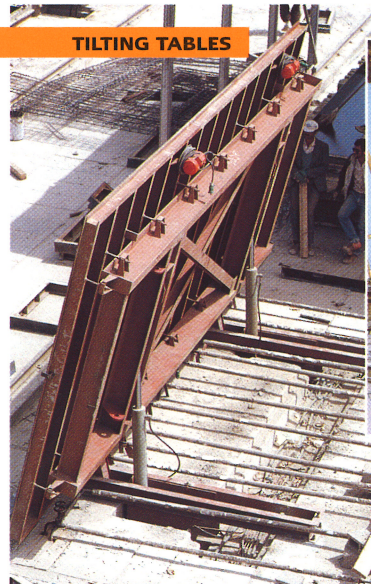
**Shipment** (exceptional width):

1 wall form = 1 package

**Average weight:** 180/220 Kg/m<sup>2</sup>

(including crating)

**Average operating time:** 0.30/0.40 - H/m<sup>2</sup> of panel



TILTING TABLES



## TILTING TABLES

May be hoisted with overhead crane or hydraulics at 80° or 90° in relation to gantry.

Widths: 3.00m, 3.50m, and 4.00m

Lengths: 8.00m, 10.00m, 12.00m

Useful load: 500 Kg /m<sup>2</sup>

**Options:** Single block or floating plate that can be dismantled.

**Complementary features:** Edge forms and box outs plant installed, insulation covers and gantries.

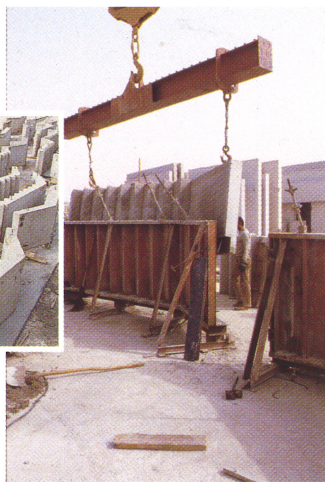
**Shipment:** Exceptional width or conventional widths.

**Average weight:** 160/220 Kg/ m<sup>2</sup>

**Average operating time:** 1.5 to 2 H/m<sup>2</sup> of concrete panel.



STAIR MOLDS



## AUTONOMOUS MOLDS

Help builders manufacture a variety of the components used in structures and common areas: stairs, balconies, parapets, sun protection systems, ducts, and landings. Also piping, manholes, retaining walls, telephone poles, etc.

**Molds:** Custom-sized to specifications and desired production rate.

**Advantages:** All components are produced rapidly and ready to install. In addition to major cost savings, the builder is able to maintain complete quality control.

**Average weight:** 120 to 160Kg/ m<sup>2</sup>



## AUTONOMOUS MOULDS FOR PRECAST ROOFS

The pieces are precast on site. The mould is put on concrete beams fixed on a slab.

**Concreting:** in two phases. Self levelling concrete injected from the bottom to middle-height, then secondary concrete poured from above.

**Stripping:** the upper part of the mould is unstuck with bottom jacks; the slope provides for ease of stripping in a single lift; the stripping of the concrete piece is achieved through the injection of compressed air.

**Transport:** the mould is designed in two parts fitted to road-transport.

